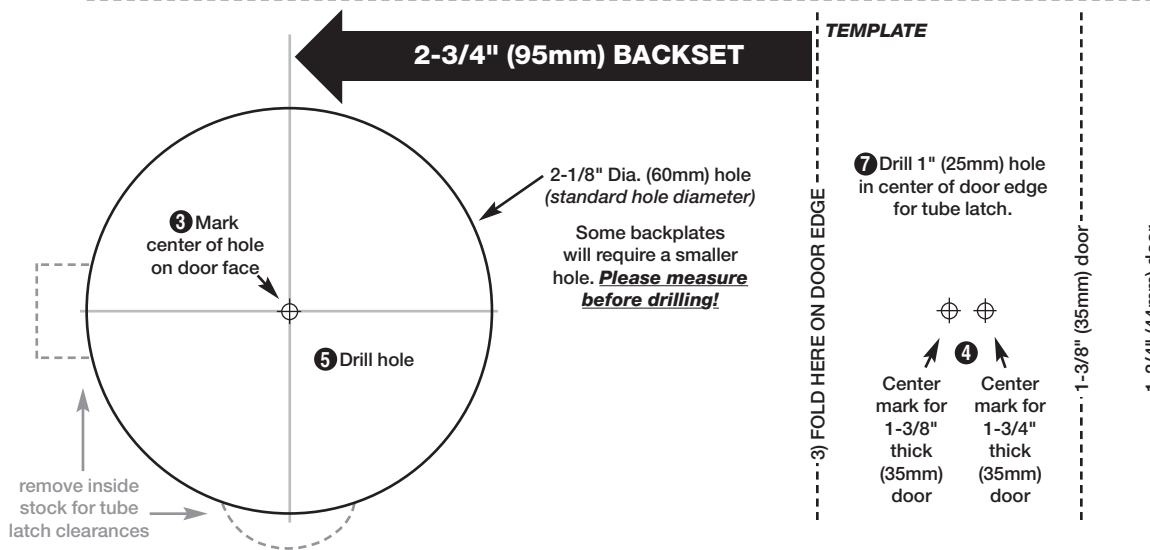
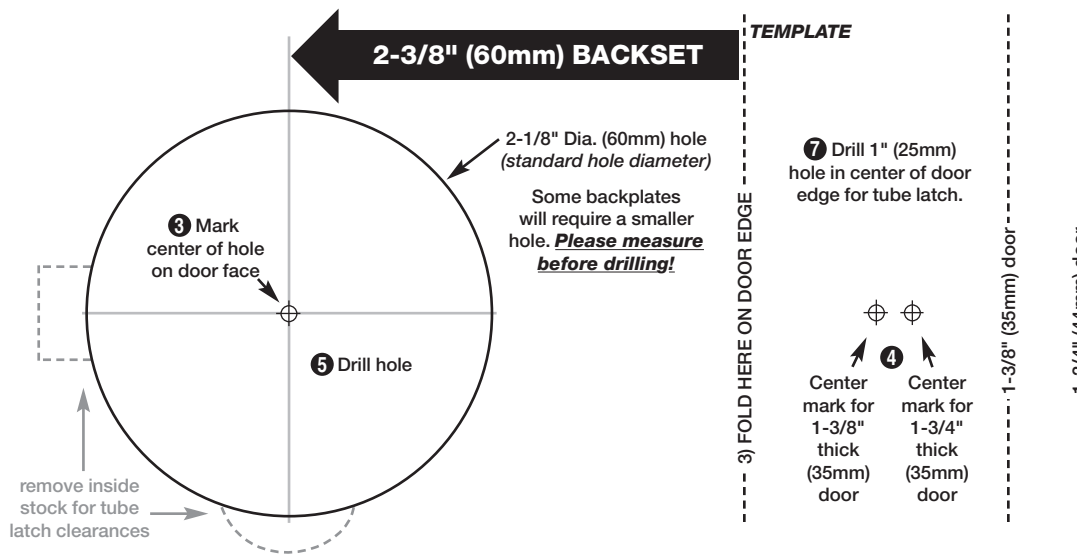


DOOR HARDWARE INSTALLATION INSTRUCTIONS (Print at 100%- Do not scale to fit)



- 1) Cut out template.
- 2) Fold on dotted line for door edge.
- 3) Mark location of hole on face of door. (2-1/8" hole is standard. Some backplates may require a smaller hole.)
- 4) Mark location of 1" center hole on edge of door for tube latch.
- 5) Drill correct diameter hole on door face 1/2 way through.
- 6) Finish drilling hole from other side.
- 7) Drill 1" hole from edge of door to the back side of the large hole allowing depth for the tube latch.
- 8) You may have to remove material from the bottom of the large hole to allow the tube latch to function.
- 9) Install tube latch with sloped side to the door jam. (Remove inside stock as needed for clearance.)
- 10) Install spindle into tube latch.
- 11) Place backplates over spindle.
- 12) Privacy Set Only: Insert privacy lock pin through small hole in backplate and thread into tube latch on inside of door.
- 13) Screw door knobs on spindle and pull tight to backplate.
- 14) Install screws in backplates.
- 15) Loosen door knob 1/2 turn and lock in place with set screws.