



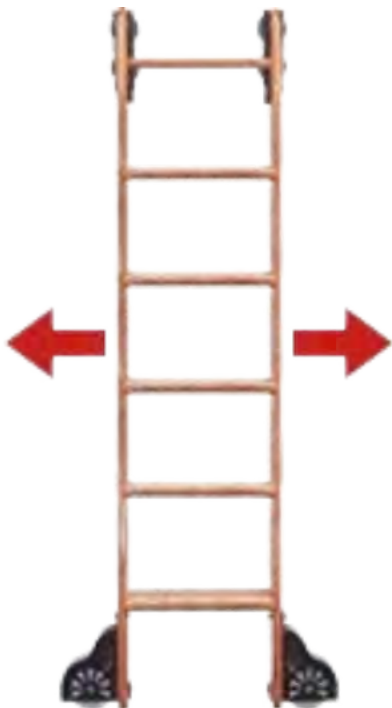
## ROLLING LADDER ORDER GUIDE

### STEP 1: Application

- Library
- Kitchen
- Pantry
- Master Bedroom
- Closet
- Wine Cellar
- Loft access; ladder attached to track, side to side movement
- Loft access; stationary upper ladder hardware affixed to header board below loft opening
- Garage
- Bunk bed; Ladder attached to track, side to side movement
- Bunk bed; stationary upper ladder hardware affixed to bed
- Retail shelving
- Attic access
- Restaurant/Bar
- Other: Specify \_\_\_\_\_

### STEP 2: Rolling or Non-Rolling

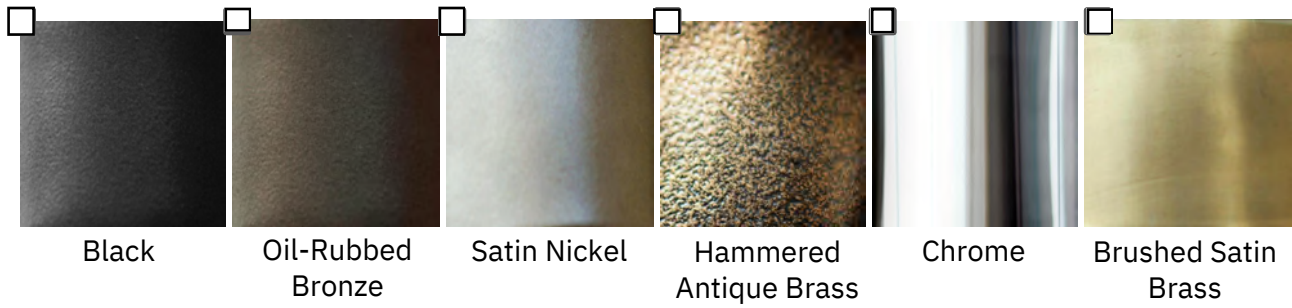
Rolling



Non-Rolling



**STEP 3: Hardware Finish**



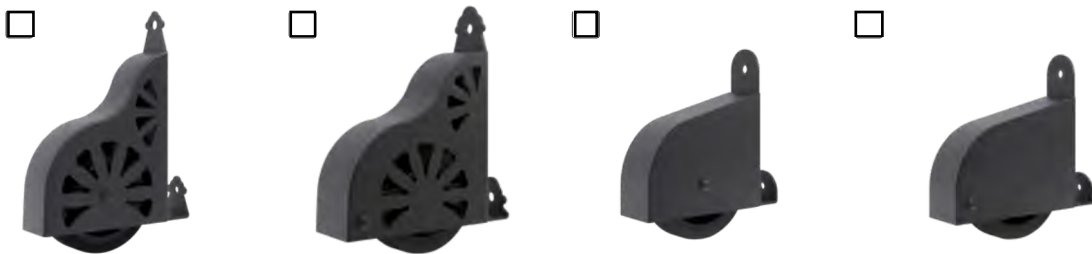
**STEP 4: Lower Assembly**

Non-Rolling:



Non-Skid Foot (Currently available in Black, Satin Nickel, and Oil Rubbed Bronze)

Rolling:



Sunburst Wheel

**Braking**  
Sunburst Wheel

Contemporary Wheel

**Braking**  
Contemporary Wheel

Note: Hammered Antique Brass is not available with Contemporary Brake Wheel

**STEP 5: Top Assembly**

Non-Rolling:



Single Hook

Double Hook

Stationary Loft

Rolling:



Double Roller  
(Fixed to track)



Single Roller (Rolling Hook)  
(Movable to different track section)



Swivel Roller  
(Used with curved track)

### STEP 6: Ladder Wood Species

Stocked ladders are 8', 9', and 10' in Maple, Red Oak, Cherry, and Walnut.  
Expect quicker shipping times if choosing a stocked ladder!



Maple



Red Oak



Cherry



Walnut



Alder



Ash



Hickory



Mahogany



Birch



Quarter  
Sawn White  
Oak



Rift Cut  
White Oak

Integrated Handrails  
(Only available for 20"  
wide ladders)

Available in all wood  
species up to 10 ft.

 Yes No

Steam Bent Handrails (Add-On)

Available in Cherry, Hickory, Maple,  
Red Oak, Walnut, White Oak

 Yes No

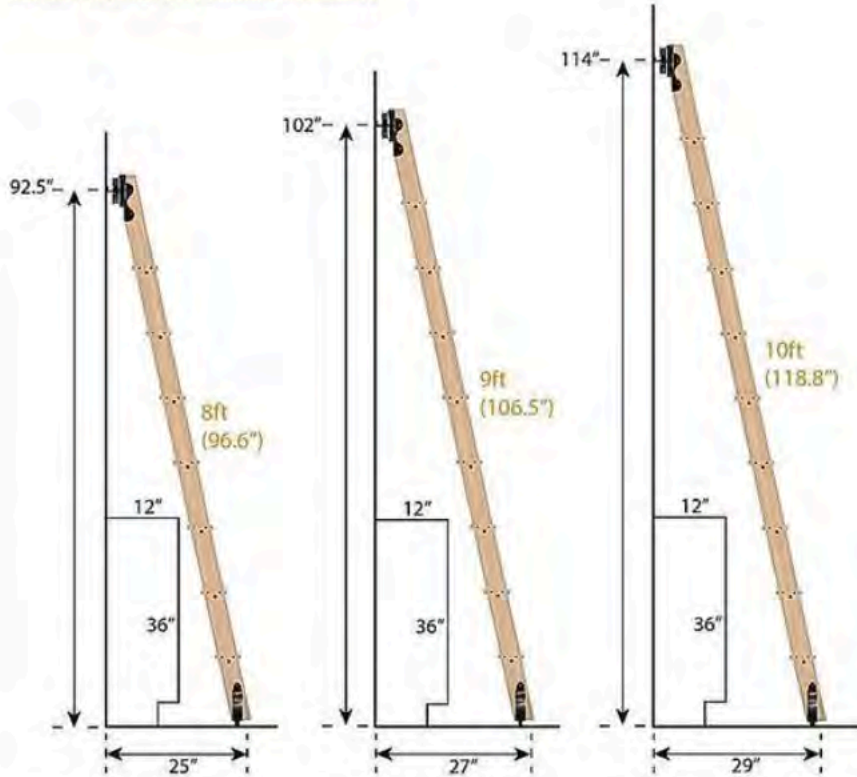
## STEP 7: Ladder Dimensions

Ladder Width:

- 16"
- 20" (recommended for ladders over 10')

### Track Height and Distance

for 8ft, 9ft, and 10ft Standard Ladders



Track Heights and Distances are approximate. Real world variables can affect accuracy.

Ladder Length:

Stock: (see diagram above)

- 8' (92.5" track mount height)
- 9' (102" track mount height)
- 10' (114" track mount height)

Custom:

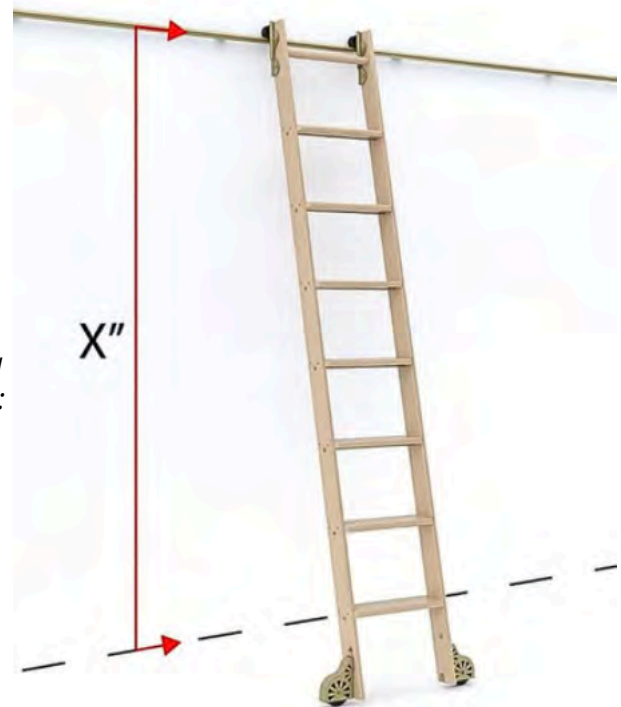
*If a Stock Ladder will not work for your project please order a custom ladder. To determine the custom length of the ladder:*

Floor to center of track height (X) = \_\_\_\_\_ inches

Ladder length (X + 5") = \_\_\_\_\_ inches

9' + ladders require extra step supports not included in kit

\_\_\_\_\_ QTY ..... QG.620.\*\*



## STEP 8: Track Selection

Note: Curved track is compatible with Swivel Roller only.  
Tracks can be spliced together and can also be cut down.

Straight Track:

\_\_\_\_\_ QTY.....8-ft. Track

\_\_\_\_\_ QTY.....6 -ft Track

\_\_\_\_\_ QTY.....4-ft Track

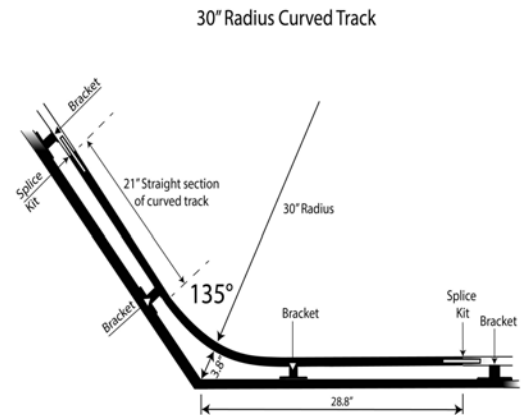
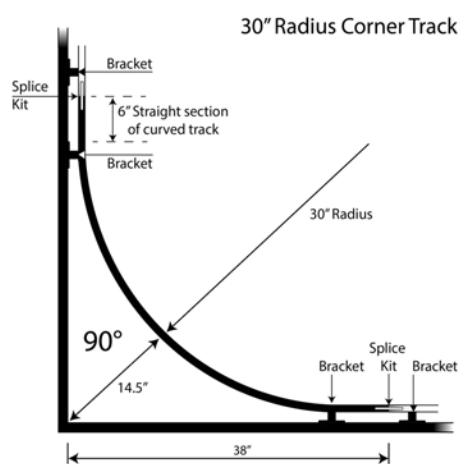
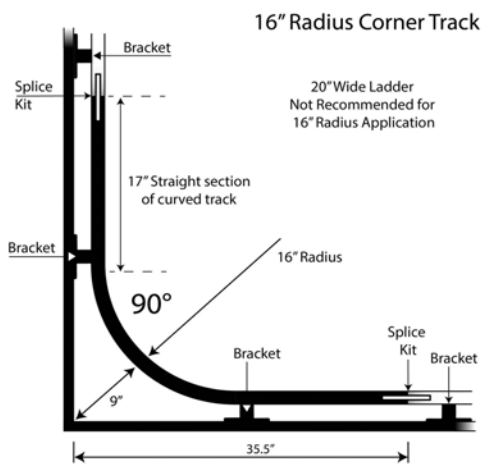
\_\_\_\_\_ QTY.....3-ft Track (Available *exclusively* in **Brushed Satin Brass**. Brushed Satin Brass is only available in 3- sections; no other colors are available in the 3-ft length option.)

Curved Track:

\_\_\_\_\_ QTY.....90° curve, 16" radius

\_\_\_\_\_ QTY.....90° curve, 30" radius

\_\_\_\_\_ QTY.....135° curve, 30" radius



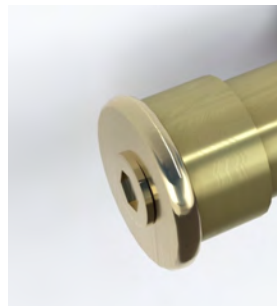
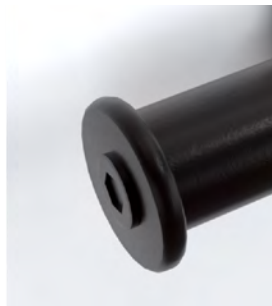
Track Connector - Needed to join 2 track sections together

\_\_\_\_\_ QTY ..... QG.41

## STEP 9: End Cap Selection

Ball Stops

Regular Stops



Please note: Brushed Satin Brass and Chrome will also include an endzcap if purchasing a Regular Stop.

\_\_\_\_\_ QTY  
# of Kits (2 Stops per kit)

\_\_\_\_\_ QTY  
# of Kits (2 Stops per kit)

**STEP 10: Track Bracket Selection**



Horizontal Wall Mount  
\_\_\_\_\_ QTY



Vertical Wall Mount  
\_\_\_\_\_ QTY



Ceiling Mount  
\_\_\_\_\_ QTY

8' track = 4 brackets  
6' track = 3 brackets  
4' & 3' track = 2 brackets  
Curved track = 2-4 brackets



Horizontal Hook Wall Mount  
\_\_\_\_\_ QTY



Vertical Hook Wall Mount  
\_\_\_\_\_ QTY

Hook Brackets are designed for Single Hook, Double Hook or Single Roller - see step 5.

**STEP 11: Accessories**

Aluminum Step Treads \_\_\_\_\_ QTY

Adhesive Step Grips \_\_\_\_\_ QTY



Black  
 Brushed Satin Brass

